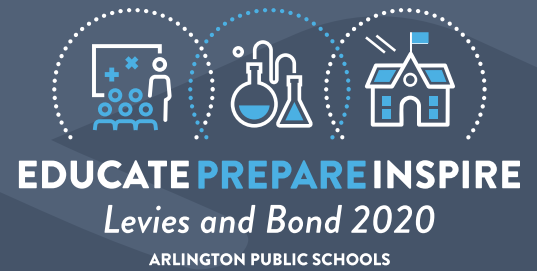


# What's on the Feb. 11, 2020 ballot for Arlington Public Schools?

Arlington Public Schools will ask the community to consider three education funding measures — a levy to fund day-to-day operations, a levy for safety and security and additional learning spaces, and a bond to rebuild Post Middle School.



## These measures:

### Educate all of our students

**PROP. 1: Renews Educational Programs and Operations Levy (EP&O)**

- Continues critical day-to-day operations not funded by the state including teachers, paraeducators, counselors, nurses, and other staff who support Arlington students
- Funds technology, instructional materials, and activities such as robotics, band, choir, drama and athletics
- Replaces an expiring levy
- New levy would expire end of 2025

### Prepare our students for the future

**PROP. 2: Capital Levy**

- Funds safety and security improvements for every school in the district
- Ensures modern learning spaces to prepare students for Science, Technology, Engineering, and Math (STEM) career fields
- Builds additional classrooms to reduce crowding and adds science and art space for students at Arlington High School
- Capital Levy expires end of 2025

### Inspire students with a modern learning environment

**PROP. 3: Post Middle School Bond**

- Builds a safe and secure Post Middle School
- Ensures Post Middle School students have access to comprehensive educational facilities equal to other schools in the district
- Provides a modern, energy-efficient building that reduces operating costs
- Bond paid off in 2040

## What is the combined cost of the three measures?

Unlike state taxes for education, this funding stays in our district to support APS students, schools and staff.

YEAR	PROP 1 EP&O	PROP 2 Capital	PROP 3 Bond	TOTAL EP&O + Capital + Bond	For a house valued at \$300,000, the yearly cost for Arlington Public Schools taxes
2017	\$3.51	0	\$1.42	\$4.93	\$1,479
2018	\$3.31	0	\$1.37	\$4.68	\$1,404
2019	\$1.50	0	\$1.19	\$2.69	\$807
2020	\$1.50	0	\$1.19	\$2.69	\$807
If approved					
2021-24	\$1.70	\$1.15	\$0.64	\$3.49	\$1,047
2025-40	\$1.70	0	\$0.96	\$2.66	\$798

## Why do we need local funding for schools?

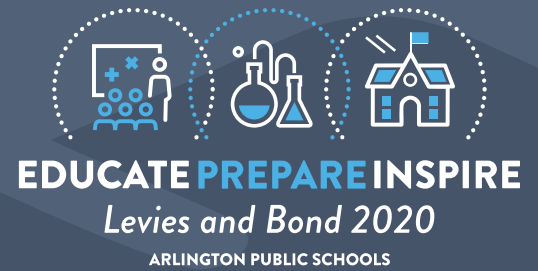
School districts are funded through state, local and federal dollars. There is a gap between what the state funds for K-12 education and what Arlington Public Schools' students need. Every four years, the district asks voters to consider renewing an EP&O Levy. In addition, the state provides limited funds for school construction and improvements. These capital projects are primarily funded through local, voter-approved levies and bonds.



**Tax Calculator:** Want to calculate your yearly local taxes for education in Arlington Public Schools? Visit <https://bit.ly/2Q2Yu06>



# Capital Levy Projects Make Improvements to Every School



**Arlington High School:** Classroom addition to ensure adequate classroom space; new Science, Technology, Engineering, Art, and Math Workshop to support preparation for STEM career fields; secure entry, cameras and access controls, and classroom door locks to improve security.

**Weston High School:** Secure entry, cameras and access controls, and classroom door locks to improve security; heating system replacement to increase resource efficiency.

**Post Middle School:** Fencing, secure entry, and classroom door locks to improve security; pedestrian and traffic safety improvements for safety.

**Haller Middle School:** Secure entry, cameras and access controls, and classroom door locks to improve security.

**Eagle Creek Elementary School:** Secure entry, cameras and access controls, and classroom door locks to improve security; fire sprinklers, fire alarm, and clock/intercom for safety; new heating system controls to increase resource efficiency; carpet replacement and gym floor replacement to extend the useful life of the building.

**Kent Prairie Elementary School:** Secure entry, cameras and access controls, and classroom door locks to improve security; student drop off area for safety; heating system upgrades to increase resource efficiency; carpet replacement and gym floor replacement to extend the useful life of the building.

**Pioneer Elementary School:** Secure entry, cameras and access controls, and classroom door locks to improve security.

**Presidents Elementary School:** Secure entry, cameras, and classroom door locks to improve security.

**Stillaguamish Valley Learning Center:** Cameras and classroom door locks to improve security.

---

## Tax relief options

Senior citizens over the age of 61, people with disabilities, disabled veterans, and people with limited incomes may qualify for property tax exemptions or deferral under Washington state law.

**Contact the Snohomish County Assessor's office for more information.**

**Phone:** 425-388-3540

**Email:** [contact.assessor@co.snohomish.wa.us](mailto:contact.assessor@co.snohomish.wa.us)

**Online:** <https://snohomishcountywa.gov/328/Property-Tax-Exemptions>

**Want to learn more?** Visit [asd.wednet.edu/2020\\_levies\\_and\\_bond](http://asd.wednet.edu/2020_levies_and_bond)

