

# Our Schools

ARLINGTON  
Public Schools

A publication for the Arlington community.

FALL 2016

## Data Dashboard:

Find the data you want!

Last spring, Arlington Public Schools released a district data dashboard on its website. Visitors to the site can look through a variety of categories including financial information, enrollment, graduation rates and absences. In addition to these areas, our district's assessment data is available for the 2015-16 school year. Results are shown by district and individual school on the Smarter Balanced math and ELA tests, End-of-Course Biology and the Measurement of Student Progress for Science.

To view the data dashboard, go to the district website ([www.asd.wednet.edu](http://www.asd.wednet.edu)) and select "Quick Links" on the right-hand side of the home page.

## Check out our community flyers!

Non-profit organizations in our community are able to post flyers on the district website to promote events and activities. Take a moment to check out these flyers! They can be found under the "Community" section of the district website.

## Your Arlington Public Schools Report is now *Our Schools!*

You may have noticed a new name and layout to the former *Your Arlington Public Schools Report* community newsletter. The name was changed to *Our Schools* to better reflect the information contained in the community newsletter. We hope you enjoy reading the newsletter!

## Creating a safe and caring environment for students

The tragic events that took place last month at Cascade Mall, which impacted families in our community, saddened all of us. One priority of the Arlington Public Schools vision is to create a safe and caring environment in our schools and workplaces. We create this environment in the following four ways:



Dr. Chrys Sweeting,  
Superintendent

1.

### Everyone shares responsibility for a positive school culture/environment.

At the beginning of the school year, students and staff are made aware of conduct expectations. There is a community tip line on our website called SafeSchools Alert. Anyone can make an anonymous report of a potential crisis, inappropriate behavior or suspicious activity to school/district administrators.

2.

### Provide safe/efficient facilities and equipment.

I recently took a bus ride with Arlington Mayor Barb Tolbert. Students were respectful and stayed in their seats; they intentionally became silent while the bus was at a railroad crossing. The bus driver has trained them well. Our maintenance staff works hard to keep our transportation fleet in good working order. Our custodial staff spends countless hours making sure our schools are safe and clean, so students learn in a comfortable environment.

3.

### Respectful conduct and civility are a universal expectation.

Arlington Public Schools commits to a safe and civil educational environment

4.

### Diversity is valued and expected.

We are all unique individuals, and everyone brings something special to our school environment. Employees participate in diversity awareness training. This year, district training focuses on increasing our understanding of the difference between equity and equality where equity means giving each student access to the resources they need to learn and thrive.

We are committed to creating and maintaining a safe and caring school environment to support the safety and learning of each student.

Passionate for Student Learning,  
Dr. Chrys Sweeting, Superintendent

Educating all students, preparing & inspiring them to achieve their full potential.

## Are you using Skyward Family Access?

Skyward Family Access is a web-based tool that gives parents access to their student's school information.

With one login, parents can view information about all students in a family who are attending a school within Arlington Public Schools. For example, you can view:

- Student, family and emergency contact information
- Assignments and grades
- Attendance
- Class schedules
- Messages from the school or teachers

Go to Quick-Links on the front of the district home page to log in to Family Access.

## Receive school closure information through FlashAlert

Arlington Public Schools, through the Puget Sound Educational Service District, is using FlashAlert Newswire to communicate school closure information due to bad weather, hazardous road conditions or other emergencies to local media sources. Parents, students, staff and community members can register up to three email and/or cell phone text addresses in a single account and receive information at the same time as the news media. A free iPhone/Android app, FlashAlert Messenger, is also available and allows families and the public to receive emergency messages much faster and more reliable than text messages. As a subscriber you can also view all local emergency items and news releases on FlashAlertNewsire.net.

Sign up today at <https://www.flashalert.net/signup.html>

# Assessment results show continued improvement across district

State assessment results are in from last spring and show continued improvement across the district. The Smarter Balanced assessments in English language arts (ELA) and math are online tests and given to students in grades 3-8 and high school. Fifth- and eighth-grade students took the Measurements of Student Progress exams in science and biology, respectively, and 10th-graders took the End-of-Course biology assessment.

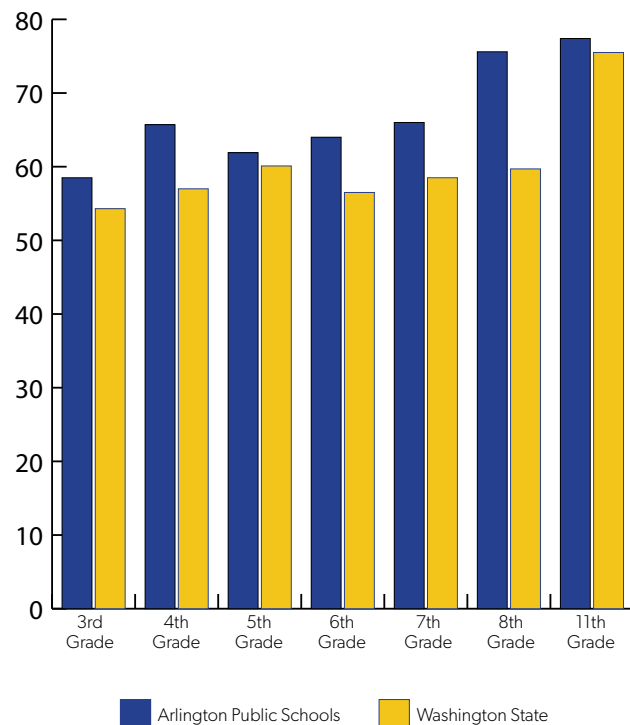
For grades 3-4, the district average for ELA and math results increased from the previous year's results. Fifth-grade ELA and math results were down slightly from the previous year but the fifth-grade science assessment increased from 71.2 percent to 74.1 percent across the district.

In middle school – while the seventh-grade results in ELA and math were down slightly – sixth- and eighth-grade ELA and math results improved from the previous year's scores. Eighth-grade science results jumped nearly 10 percent from 70.1 percent in 2014-15 to 79.8 percent in 2015-16.

While the End-of-Course (EOC) biology test results for 10th-graders were down slightly from the previous year, they were still well above the state average. The 11th-grade assessment results for both ELA and math increased dramatically from the previous year.

"School administrators and staff have spent a lot of time looking at data to determine how they can change strategies to improve student achievement," said Eric DeJong, Executive Director of Teaching and Learning. "This was one factor for the improved scores this past spring."

Smarter Balanced Spring 2016 ELA Results  
Arlington Public Schools compared to state



## Senior citizens!

### Come support the Eagles free of charge!

Our schools receive tremendous support from our community. To show appreciation of our senior citizens, we invite Arlington residents 65 and older to become members of our Golden Eagles Club.

Golden Eagles Club membership provides senior citizens with an opportunity to participate in regular season "home" athletic events offered by Arlington Public Schools free of charge. The card cannot be used for athletic playoff games or for any state-sponsored athletic events even if they are hosted by Arlington Public Schools. Membership in the Golden Eagles Club is offered by Arlington Public Schools in appreciation for the support senior citizens provide to Arlington schools.

Golden Eagles Club Membership is open to all residents within the boundaries of Arlington Public Schools who are 65 or older. Please contact the Public Information Office at 360-618-6217 to receive an application.





## Post Middle Schoolers learn about significance of 9/11

Eighth-grade students from Post Middle School visited Arlington Fire Department's Station 46 in September to view the 9/11 memorial and see a piece of the World Trade Center. In 2014, four Arlington firefighters traveled to New York to transport back a piece of the World Trade Center. Arlington was only one of three areas in Washington state to receive an artifact from the World Trade Center.

"None of these students were alive when 9/11 happened and it's important for them to understand an important part of American history," said deputy chief Tom Cooper.

*Post Middle School eighth-graders listened to Arlington Fire Department Deputy Chief Tom Cooper explain the importance of the 9/11 Memorial at Station 46 in Arlington.*

Cooper talked with the students about how the attacks happened and how police officers and firefighters gave their lives to protect others.

"It meant a lot to see the memorial and think of the sacrifice they made," said eighth-grader Elijah Moore.

## District schools strive to fight frequent student absences

Students in Arlington Public Schools are striving for great school attendance so they can succeed academically. September was declared Attendance Awareness Month by the Office of Superintendent of Public Instruction. For 2015-16, chronic absences in the district were at nearly 15

percent. While not a direct comparison, since the start of this school year the absence rate has been around 3.5 percent.



Staff at Kent-Prairie Elementary have used the "Strive for Five" program which encourages no more than five absences in a school year. Families can track absences by using a postcard that was sent home with students. At the school, a target is used to track absences. The inner green color is for students who miss five or fewer days; the next ring is yellow and

indicates average attendance of 5-10 absences per year; the outer ring is red and warns that a student is at risk of chronic absenteeism with 11-17 or more absences. Being absent 18 days is missing 10 percent of the school year and negatively affects a student's academic performance. There's an incentive program of special recess if students meet their goal.

"The goal for our school is 95 percent student attendance," said Kent Prairie's assistant principal Colleen Van Belle. "If a student isn't here at school, they can't be learning. We work individually with certain families whose children are frequently absent to see how we can help their children attend school."

Eagle Creek Elementary also uses the Strive for Five program but uses a castle theme to keep students excited about attending school. A student can write their name on a castle



*Kent Prairie fifth-graders Xander Ipsen and Jaydin Van Winkle – who have perfect attendance – show off the "Strive for Five" target which helps students attend school.*

poster in the front hallway if they have perfect attendance for the month. Another dragon poster with 180 scales is also used. When the school hits 95 percent attendance for the day, students get to color in a scale. Students also track their attendance daily using a calendar so they can visually see their attendance patterns.

"The students' 'quest' is to

attend eagerly," said Eagle Creek's assistant principal Bethany Belisle. "Research shows that when students improve their attendance rates, they improve their academic prospects and chances for graduating. The earlier they can start good school attendance, the better it will serve them as they progress through their educational career."

Postal Customer ECRWSS

## Meet Our Advisory Council for Education

Did you know there's a community and school committee that provides feedback to the board of directors on educational issues? The purpose of the Advisory Council for Education (ACE) is to provide a systematic representative public involvement in education decisions under consideration by the board of directors. The ACE committee meets monthly during the school year.

The council consists of:

- 10 citizens (each school board director appoints two);
- 10 members from the community (one from each school and one from the Superintendent);
- 1 certificated teacher representative;
- 1 classified employee representative;
- 1 administrative staff representative (appointed by the Superintendent); and
- 6 student representatives (2 from AHS, 2 from WHS, 2 from SVS).

Meetings are open to the public and you can find the agendas, minutes and roster on the district website ([www.asd.wednet.edu](http://www.asd.wednet.edu)) under Community.

If you are interested in a particular agenda item, it is a great way to find out more. You can also contact a representative – listed on the website roster – with any concerns.

## Schools

**Arlington High School**  
18821 Crown Ridge Blvd.  
Arlington, WA 98223  
(360) 618-6300

**Weston High School**  
4407 - 172nd St. NE  
Arlington, WA 98223  
(360) 618-6340

**Haller Middle School**  
600 East 1st St.  
Arlington, WA 98223  
(360) 618-6400

**Post Middle School**  
1220 East 5th St.  
Arlington, WA 98223  
(360) 618-6450

**Eagle Creek Elementary**  
1216 East 5th St.  
Arlington, WA 98223  
(360) 618-6270

**Kent Prairie Elementary**  
8110 - 207th St. NE  
Arlington, WA 98223  
(360) 618-6260

**Pioneer Elementary**  
8213 Eaglefield Dr.  
Arlington, WA 98223  
(360) 618-6230

**Presidents Elementary**  
505 East 3rd St.  
Arlington, WA 98223  
(360) 618-6240

**Stillaguamish Valley School**  
1215 East 5th St.  
Arlington, WA 98223  
(360) 618-6440

**ECEAP/APPLE Preschool**  
1216 East 5th St.  
Arlington, WA 98223  
(360) 618-6434

**Director  
Early Learning &  
Categorical Programs**  
Ms. Terri Bookey  
(360) 618-6210

**Director  
Special Education**  
Mr. Dave McKeller  
(360) 618-6209

**Director  
Technology**  
Mr. Mark Ehrhardt  
(360) 618-6211

**Public Information  
Officer**  
Mr. Gary Sabol  
(360) 618-6217

**Transportation**  
19124 63rd Ave. NE  
Arlington, WA 98223  
(360) 435-3307

## Who to Contact

Administration Office Website:  
[www.asd.wednet.edu](http://www.asd.wednet.edu)  
360-618-6200  
Fax: 360-618-6221  
315 N. French Ave.  
Arlington, WA 98223  
Hours: 7:30 a.m. to 4:30 p.m.

**Superintendent**  
Dr. Chrys Sweeting  
(360) 618-6202

**Assistant Superintendent**  
Ms. Kathy Ehman  
(360) 618-6207

**Executive Director  
Human Resources**  
Mr. Mike Johnson  
(360) 618-6212

**Executive Director  
Financial Services**  
Ms. Deborah Borgens  
(360) 618-6203

**Executive Director  
Operations**  
Mr. Brian Lewis  
(360) 618-6255

**Executive Director  
Teaching and Learning**  
Mr. Eric DeJong  
(360) 618-6220

**Director  
Support & Child  
Nutrition Services**  
Mr. Ed Aylesworth  
(360) 618-6237

Arlington Public Schools provides equal educational opportunity and treatment for all students in all aspects of the academic and activities program without discrimination based on race, religion, creed, color, national origin, age, honorably discharged veteran or military status, sex, sexual orientation, gender expression or identity, marital status, the presence of any sensory, mental, or physical disability, or the use of a trained dog guide or service animal by a person with a disability. The District will provide equal access to school facilities to the Boy Scouts of America and all other designated youth groups listed in Title 36 of the United States Code as a patriotic society. District programs will be free from sexual harassment. Auxiliary aids and services will be provided upon request to individuals with hearing, vision, or speech disabilities.

TITLE IX OFFICER AND COMPLIANCE COORDINATOR  
Mr. Mike Johnson  
Executive Director, Human Resources  
315 N French Ave.  
Arlington, WA 98223  
360.618.6212  
[mjohnson@asd.wednet.edu](mailto:mjohnson@asd.wednet.edu)

SECTION 504 COORDINATOR  
Ms. Kathy Ehman  
Assistant Superintendent  
315 N French Ave,  
Arlington, WA 98223  
360.618.6207  
[kehman@asd.wednet.edu](mailto:kehman@asd.wednet.edu)